

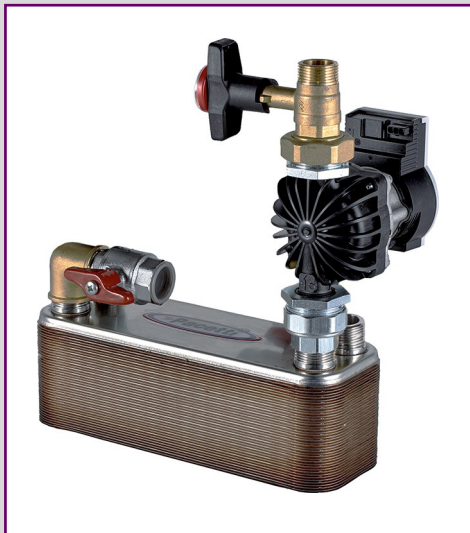
dal 1968



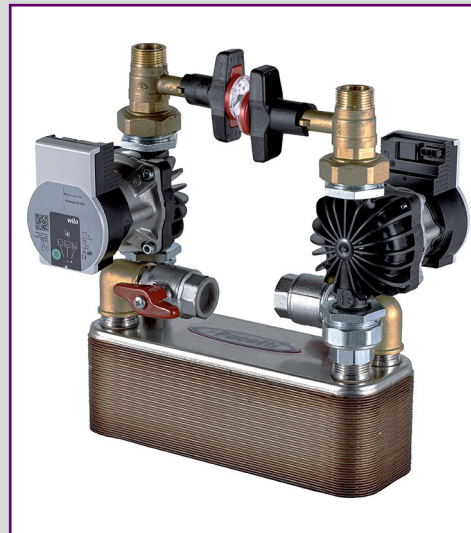
SCAMBIATORI - BOLLITORI - SERBATOI



# SEP



SEP 1



SEP 2

PRE-ASSEMBLED SEPARATOR SYSTEM



Pre-assembled system designed to separate heating circuits, typically used with wood-burning fireplaces and boilers, but also suitable for other energy sources.

It consists of a brazed plate heat exchanger BV26, programmable electronic pump/s, thermometers, shut-off valve and check valve.

Extremely compact and easy to install, this module can be provided with insulation as optional.

It can be equipped with 1 or 2 pumps (SEP1 or SEP2), and is available with power output 25, 35 or 45 kW.

**AVAILABLE MODELS**

SEP1-25	SEP1-35	SEP1-45	SEP2-25	SEP2-35	SEP2-45
No.1 BV026/020-H	No.1 BV026/030-H	No.1 BV026/040-H	No.2 BV026/020-H	No.2 BV026/030-H	No.1 BV026/040-H
Power 25 kW	Power 35 kW	Power 45 kW	Power 25 kW	Power 35 kW	Power 45 kW

**ACCESSORIES & SPARE PARTS**

**ITEM**

*PART NUMBER*

NON-REMOVABLE THERMAL AND ANTI-CONDENSATION INSULATION  
(20 plates)

ISOLBV026AT-20

NON-REMOVABLE THERMAL AND ANTI-CONDENSATION INSULATION  
(30 plates)

ISOLBV026AT-30

NON-REMOVABLE THERMAL AND ANTI-CONDENSATION INSULATION  
(40 plates)

ISOLBV026AT-40

NON-REMOVABLE THERMAL AND ANTI-CONDENSATION INSULATION  
(50 plates)

ISOLBV026AT-50

PAINTED STEEL WALL MOUNTING BRACKET

ST-BV-01



**WORKING CONDITIONS**

	Capacity	SEP1	SEP2
Working pressure	bar	ATM ÷ 10	ATM ÷ 10
Working temperature	°C	AMB ÷ 90	AMB ÷ 90

**REGULATORY COMPLIANCE**

European Pressure Equipment Directive (PED) 2014/68/UE | Sound Engineering Practice - excluded from CE marking - Art. 4.3

D.M. 174/04 | Suitable for contact with water for human consumption

**SEP1 PERFORMANCE**

Primary (75-60)°C | Secondary (50-65)°C

	Model	SEP1-25	SEP1-35	SEP1-45
Power	<i>kW</i>	25	35	45
Continuous production	<i>L/h</i>	1460	2050	2630
Pressure drop (primary)	<i>kPa</i>	18	16	15
Pump head (secondary)*	<i>m.W.C.</i>	3,5	3,0	2,0
Pump power consumption	<i>W</i>	10 ÷ 75	10 ÷ 75	10 ÷ 75

\* Pump at full speed

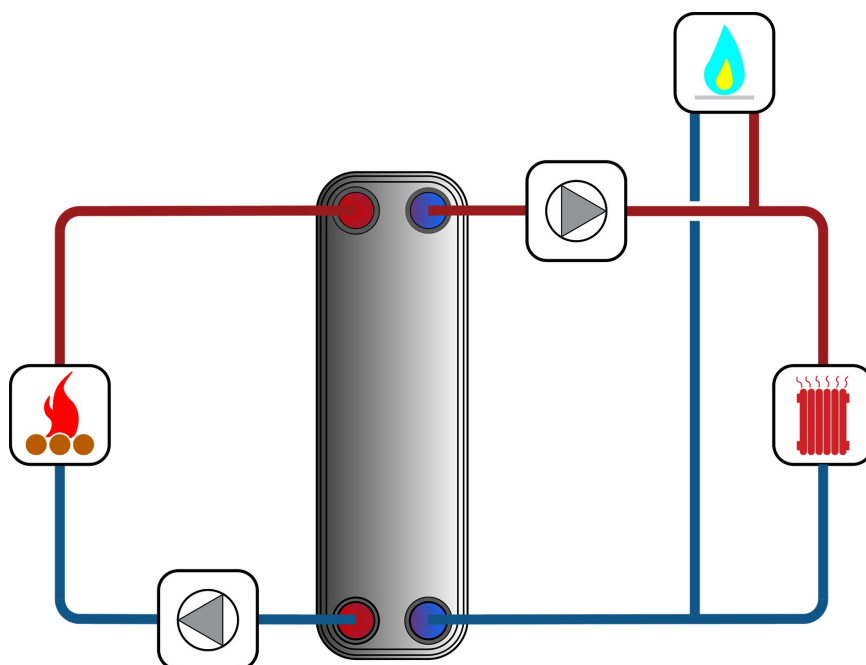
**SEP2 PERFORMANCE**

Primary (75-60)°C | Secondary (50-65)°C

	Model	SEP2-25	SEP2-35	SEP2-45
Power	<i>kW</i>	25	35	45
Continuous production	<i>L/h</i>	1460	2050	2630
Pressure drop (primary)	<i>m.W.C.</i>	3,5	3,0	2,0
Pump head (secondary)*	<i>m.W.C.</i>	3,5	3,0	2,0
Pump power consumption	<i>W</i>	10 ÷ 75	10 ÷ 75	10 ÷ 75

\* Pump at full speed

**INSTALLATION DIAGRAM**



[www.pacetti.it](http://www.pacetti.it)



MADE IN ITALY

**PACETTI S.r.l.**

Via G. Marconi, 240/242

44122 - Ferrara - ITALY

Tel. +39 0532 774066

Fax +39 0532 773835

[info@pacetti.it](mailto:info@pacetti.it)