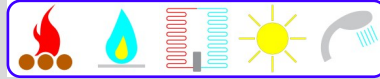


dal 1968



SCAMBIATORI - BOLLITORI - SERBATOI



COMPACT



PACKAGED PLATE HEAT EXCHANGERS

COMPACT skids are pre-assembled modules, specifically designed and manufactured to ensure high, instantaneous, and continuous production of DHW at a constant temperature set by the user, either by connecting them directly to the water distribution network or as heaters for DHW thermal storage tanks.

The main components are:

- High-efficiency, gasketed plate heat exchanger with AISI 316L stainless steel plates and EPDM gaskets for perfect compatibility with food-grade fluids. The ability to thoroughly clean the plate pack ensures hygiene and maintains heat exchange efficiency over time;
- Electronic variable speed primary pump to manage the hot water flow to the heat exchanger and optimize consumption based on actual DHW demand. Also available in a twin-head version with a second backup motor that automatically switches on in the event of a failure of the first;
- Highly sensitive motorized electronic valve, allowing you to set the desired DHW temperature and program anti-Legionella cycles on an hourly, daily, or weekly basis.

The extremely compact design minimizes the space required for installation; fully insulated and pre-wired, **COMPACT** is designed to facilitate installation by minimizing the work required to connect it to the plumbing system.

CONSTRUCTION



C150

HEAT EXCHANGER PLATES MATERIAL	Stainless Steel AISI 316L
HEAT EXCHANGER TYPE	Gasketed
HEAT EXCHANGER MODEL	PK 150S
MOTORISED THREE-WAY VALVE	Includes proportional and integral controller, complete with sensor. Programmable anti-Legionella cycle.
PRIMARY CIRCULATING PUMP	Variable speed, single or twin-head
SECONDARY CIRCULATING PUMP (OPTIONAL)	Single-head
CONTROL PANEL	Protected switches for sparate power-on of electrical components (circulators, valves, etc.) and operational indicator lights. IP65 casing.
BASE FRAME MATERIAL	Galvanised steel

WORKING CONDITIONS

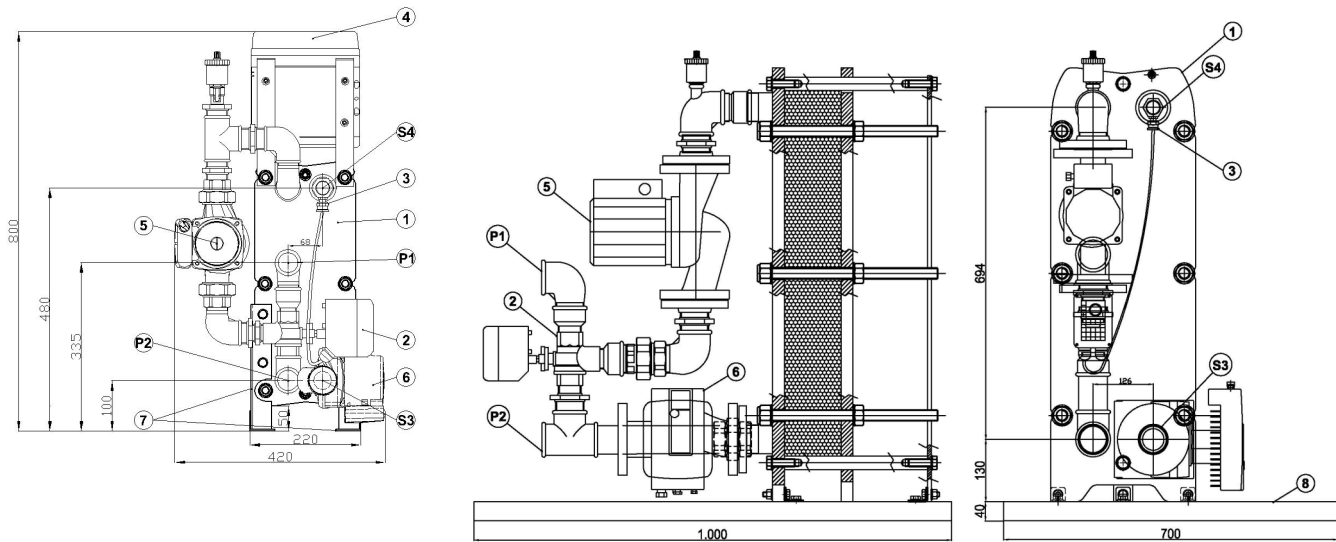
	Model	C150
Primary working pressure	bar	ATM ÷ 6
Secondary working pressure (with circulator)	bar	ATM ÷ 10
Secondary working pressure (without circulator)	bar	ATM ÷ 10
Working temperature	°C	AMB ÷ 110

REGULATORY COMPLIANCE

European Pressure Equipment Directive (PED) 2014/68/EU | SEP (Sound Engineering Practice) - exclusion from CE marking - Art. 4.3

D.M. 174/04 or Reg. (CE) 1935/04 | Compatible with potable water

European Directive 2014/35/EU low voltage (Control panel)



Re.	Part description	COMPACT 150	
1	Gasketed plate heat exchanger	•	
2	3-way electronic mixing valve	•	
3	Temperature senso	•	
4	Control panel	•	
5	Primary circulator	•	
6	Secondary circulator	N/A	
7	Support brackets	•	
8	Base frame	(1000 × 700 × 40) mm	
P1	Primary inlet	Threaded connection 2" F	
P2	Primary outlet	Threaded connection 2" F	
S3	Secondary inlet	Without circulating pump	2" M
		With circulating pump and PHE up to 29 plates	1" F
		With circulating pump and PHE from 33 to 41 plates	1 1/4" F
		With circulating pump and PHE 45 plates	DN40 - PN10
S4	Secondary outlet	Without circulating pump	2" M
		With circulating pump and PHE from 18 to 25 plates	1 1/4" F
		With circulating pump and PHE from 29 to 41 plates	1 1/2" F
		With circulating pump and PHE 45 plates	2" F

COMPACT150 PERFORMANCE

Primary (80-50)°C
Secondary (10-70)°C

PHE no. of plates	POWER	PRIMARY FLOW	PRIMARY HEAD	SECONDARY FLOW
	<i>kW</i>	<i>litre/h</i>	<i>m.c.a.</i>	<i>litre/h</i>
PK150S/18	232	6801	1,8	3365
PK150S/21	290	8501	1,1	4207
PK150S/25	349	10201	1,0	5048
PK150S/29	407	11901	3,0	5890
PK150S/33	465	13601	2,1	6731
PK150S/37	523	15301	3,2	7572
PK150S/41	581	17001	2,0	8414
PK150S/45	639	18701	5,2	9255

Primary (55-35)°C
Secondary (10-45)°C

PHE no. of plates	POWER	PRIMARY FLOW	PRIMARY HEAD	SECONDARY FLOW
	<i>kW</i>	<i>litre/h</i>	<i>m.c.a.</i>	<i>litre/h</i>
PK150S/18	162	8000	2,0	4000
PK150S/21	194	9000	1,2	4800
PK150S/25	243	11000	1,1	6000
PK150S/29	259	14000	2,8	6400
PK150S/33	324	16000	1,0	8000
PK150S/37	365	18000	1,7	9000
PK150S/41	405	20000	1,0	10000
PK150S/45	486	22000	4,0	12000

CIRCULATING PUMP TECHNICAL CHARACTERISTICS

CIRCULATING PUMP	TYPE	POTENTIAL <i>Volt</i>	PHASES	PK 150 Plates no.	POWER		ELECTRIC CURRENT	
					MIN <i>Watt</i>	MAX <i>Watt</i>	MIN <i>Ampere</i>	MAX <i>Ampere</i>
PRIMARY	SINGLE-HEAD	230	1 + N	18 - 21	12	194	0,11	1,56
				25	17	267	0,19	1,18
				29 - 33	15	463	0,18	2,05
				37 - 41	16	615	0,22	2,71
				45	30,7	1263	0,31	5,53
	TWIN-HEAD	230	1 + N	18 - 21	12	194	0,11	1,56
				25	17	267	0,19	1,18
				29 - 33	15	463	0,18	2,05
				37 - 41	16	615	0,22	2,71
				45	30,7	1263	0,31	5,53

The above data refer to the performance of the standard pumps when operating at maximum speed.

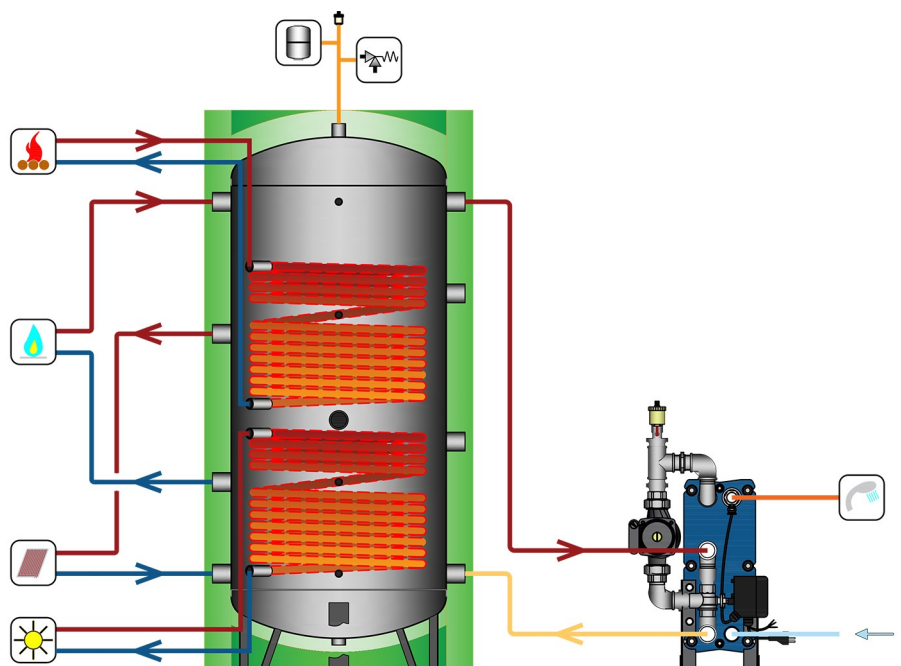
ACCESSORIES & SPARE PARTS

ITEM

PART NUMBER

REMOVABLE THERMAL INSULATION | SMALL SIZE
7 to 45 plates

ISOLPK150_COMP_C



The proposed diagrams are for illustration purposes only.

www.pacetti.it



MADE IN ITALY

PACETTI S.r.l.

Via G. Marconi, 240/242

44122 - Ferrara - ITALY

Tel. +39 0532 774066

Fax +39 0532 773835

info@pacetti.it